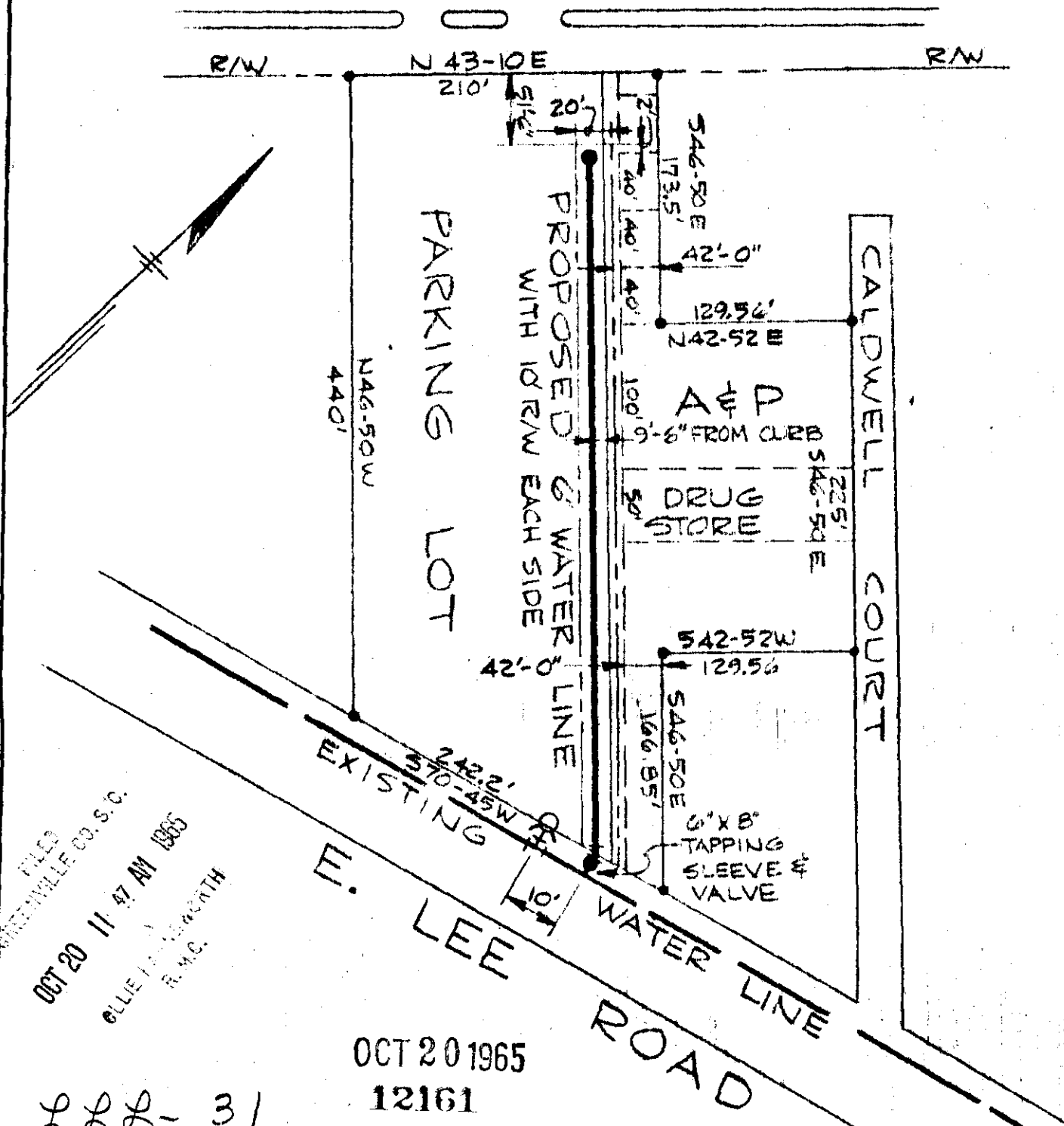


WADE HAMPTON BLVD.



FILED
 GREENVILLE CO., S.C.
 OCT 20 11 47 AM 1965
 COLLIE BRAMOWORTH
 R.M.C.

OCT 20 1965
 12161

31
 VALLEY COMMERCIAL PROPERTIES
 WADE HAMPTON W & S DISTRICT

SCALE 1" = 100'
 PIEDMONT ENGINEERS AND ARCHITECTS,
 GREENVILLE, S. C.

GREENVILLE COUNTY, S.C. 7-14-65

12161 Filed This 20 day of Oct 1965
 And Recorded in Vol. 888 Page 31 at 11:47 AM
 Collie Bramoworth
 Register Mesne Conveyance Greenville County, S. C.